



BYWATER HERRING
SALES & LETTINGS

A TRADITION OF TRUST



Seaforth Gardens Biddenham

£350,000

- Chain Free!
- Luxurious En Suite To Master
- Two Parking Spaces
- 20 Minute Walk To Bedford Train Station
- Good Local Schools
- Three Double Bedrooms
- Modern Kitchen With Plenty Of Storage And Integrated Appliances
- London In An Hour But Close To The Countryside
- Council Tax Band D
- Stylish Modern Living with Space For All The Family

Want a picture-postcard village life, but still the hustle and bustle of the Big Smoke? This modern townhouse gives you the best of both worlds.

THE PROPERTY

Built in 2018, this stylish home sits on the outskirts of Biddenham Village within the popular Kings Field development — a brilliant spot for anyone wanting peace and greenery, without feeling cut off.

Bedford Railway Station is around a 20-minute walk away, with fast and frequent trains into central London. You could be stepping off at St Pancras in under an hour, which makes this an ideal home for commuters or anyone who likes having London within easy reach.

Step inside and you'll find a modern kitchen to the front, complete with integrated appliances, and a spacious lounge/diner at the rear. It's a lovely open space that works equally well for cosy evenings in or hosting friends and family.

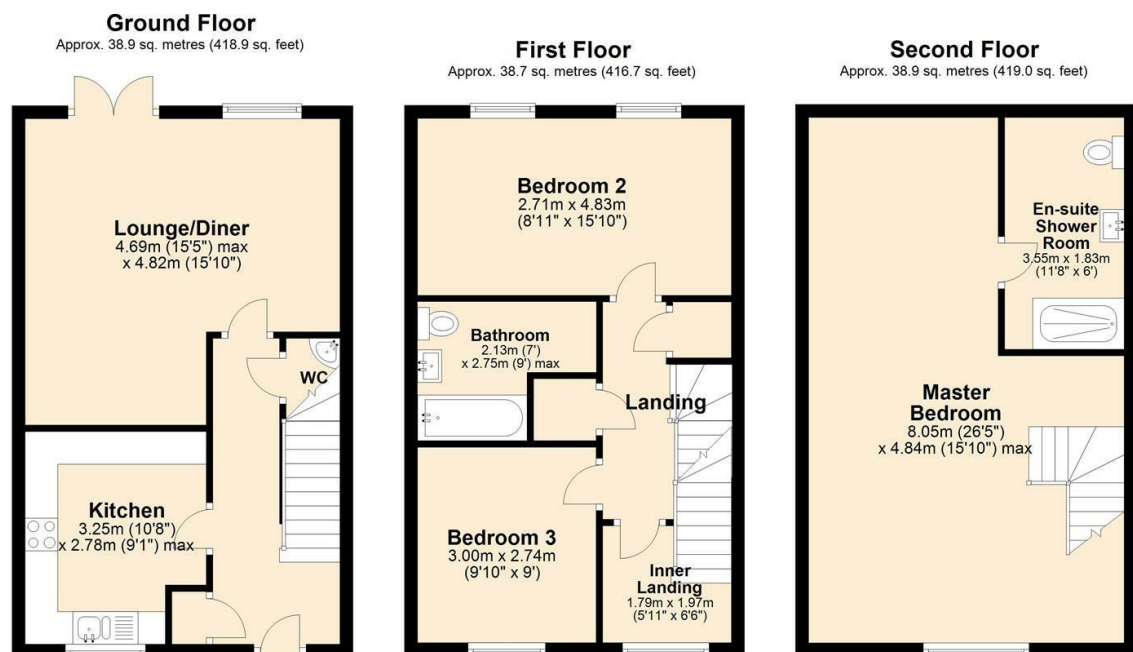
French doors open out onto the garden — perfect for summer entertaining. Outside, the low-maintenance rear garden is a great mix of decking and artificial grass, giving you the best of outdoor living without the constant upkeep.

Head upstairs and you'll be impressed again. The first floor offers two generous double bedrooms along with a stylish family bathroom.

And just when you think that's all, the second floor takes it up a level — a huge master bedroom with its own full-sized en suite shower room. It feels like a private retreat away from the rest of the house.

The property is practical too, with plenty of storage, a downstairs WC, and although there isn't a garage, there is parking for two cars at the front of the property.

Families will also love the location. St Joseph's Lower School (rated "Good" by Ofsted) is under a 10-minute walk through Biddenham Village. Older children are well catered for too, with Biddenham International School and Sports College (also rated "Good") just a short



Total area: approx. 116.6 sq. metres (1254.6 sq. feet)

